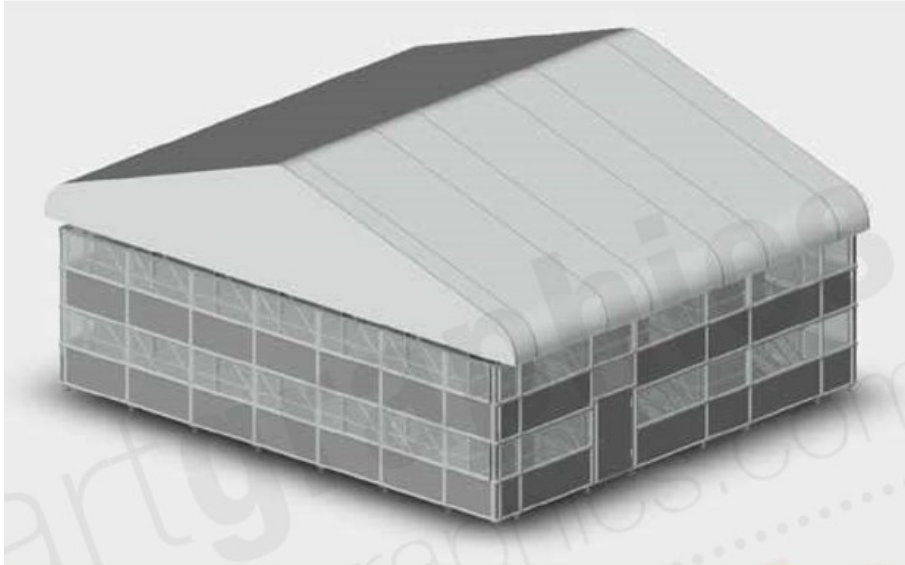


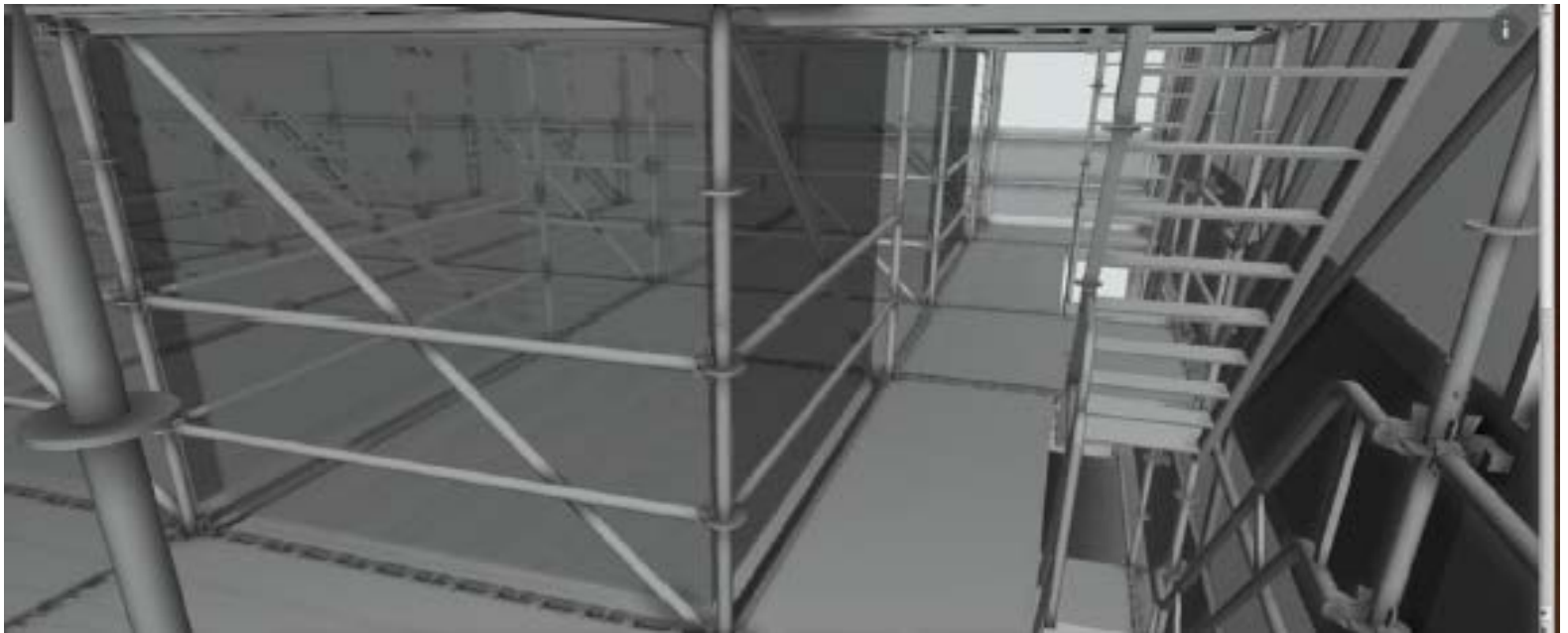


TEMPORARY SHELTER WEATHER STRUCTURES

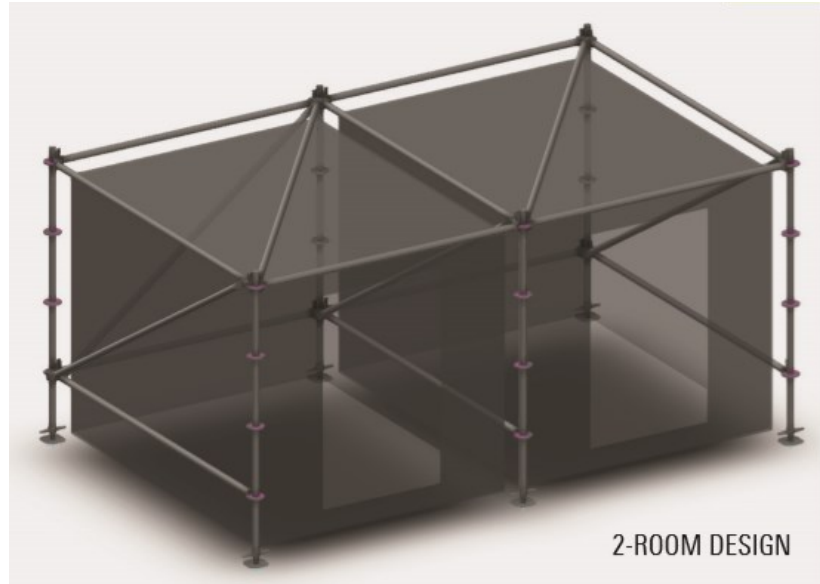
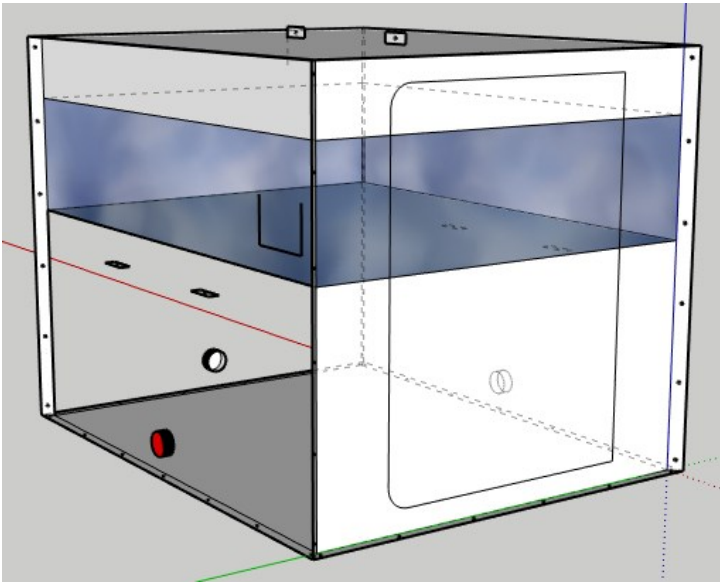
2-Story 36-Bed Temporary Structure Shown Available for Humanitarian/Emergency Relief Purposes.



- ◇ **Quality:** All scaffold parts manufactured in Germany. Fabric materials are durable, Fire Retardant.
- ◇ **Reconfigurable:** Design can be quickly revised to fit space limitations of client. Roof can be eliminated if constructed indoors.
- ◇ **Integrated Design:** All Layher parts designed to work together seamlessly. Scaffold structure, walls, roof, & doors.
- ◇ **Reusable:** Most Layher Scaffold parts can be reused. Minimal consumables.
- ◇ **Versatile:** Multiple stair options, wall options, roof options,



— Frame-supported Fabric Dormitories/Lavatories —



Highly Configurable Structures

- ◇ OSHA approved structures suitable for indoor and outdoor commercial use
- ◇ Constructs quickly and safely
- ◇ Heavy-duty steel scaffold frame
- ◇ Multi-story capability
- ◇ Easily adapts to support mechanical services (plumbing, electrical, and HVAC).

Rooms Inside a Sheltered Structure

- ◇ Standard room size: 6'3" x 7'11" x 6'3"
- ◇ Lockable doors for privacy and security
- ◇ Re-usable and easy to disinfect
- ◇ Fire retardant 18oz vinyl fabric
- ◇ Removable non-skid floor
- ◇ 360 degree windows of 19 gauge vinyl clear film

— Emergency Drinking Water Bladder Systems —



Emergency Potable Drinking Water Storage Tanks and Bladders

